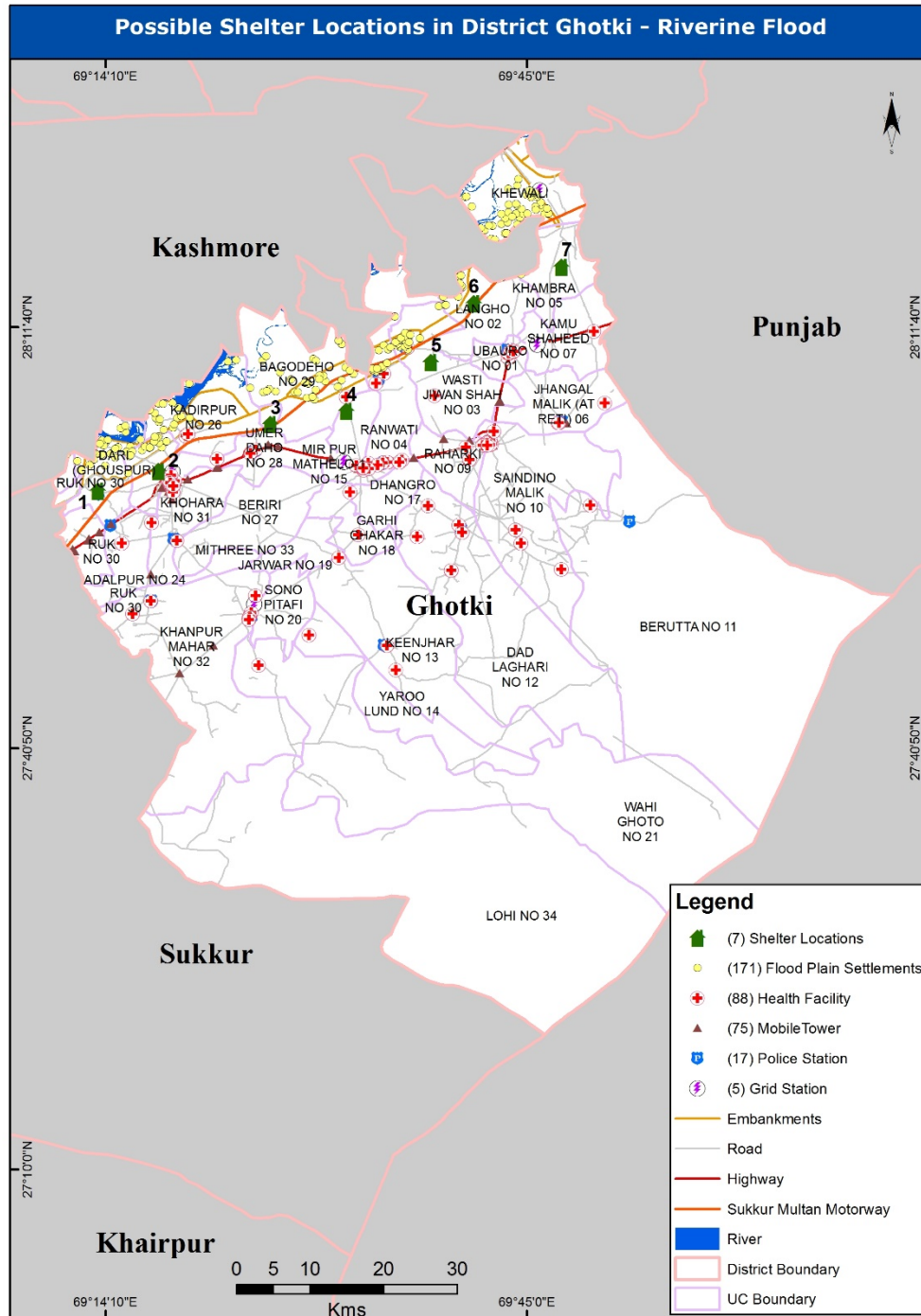


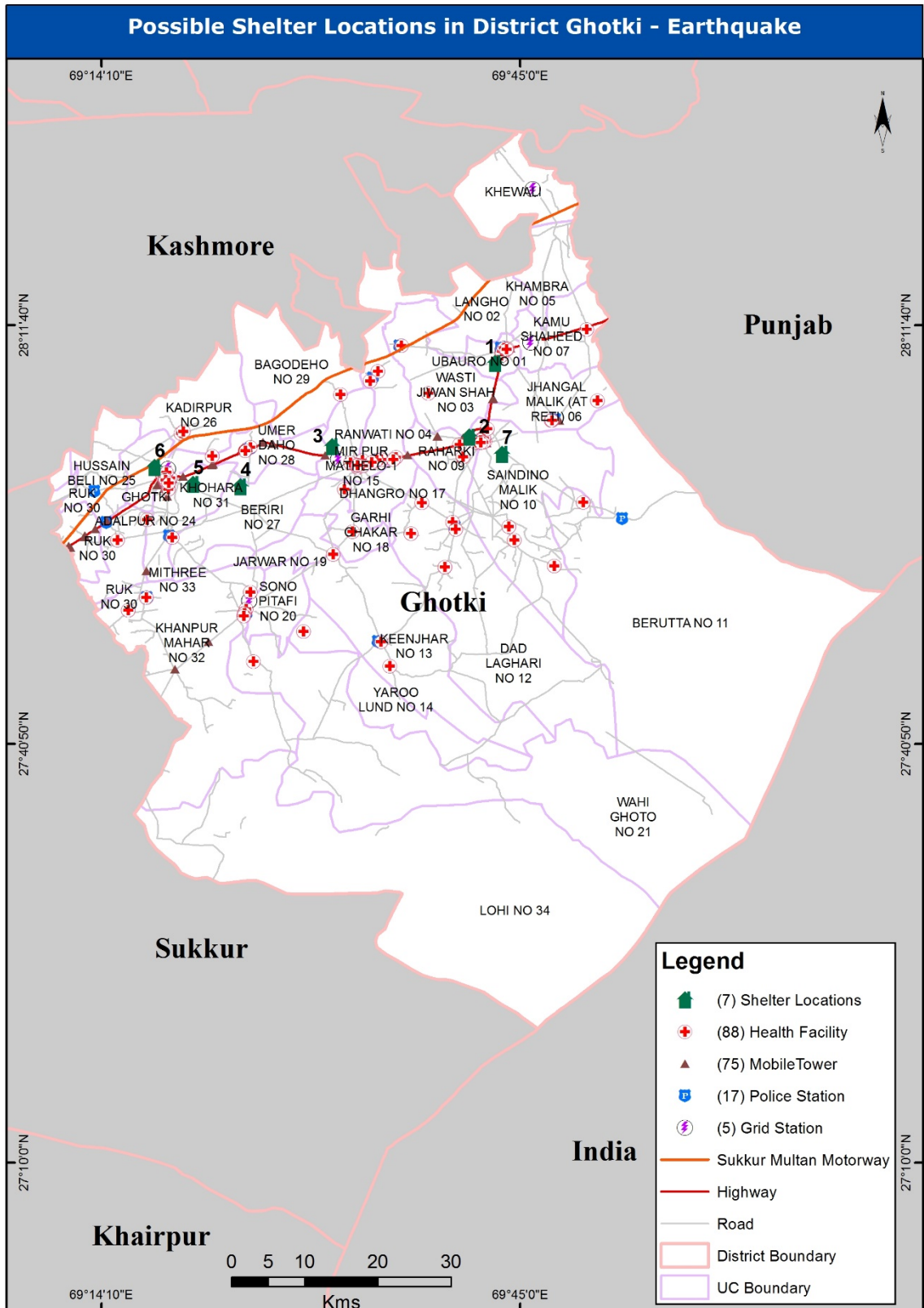
## SHELTER LOCATION MAP

As part of preparedness, response, and rehabilitation against hazards, shelter places are integral. These are necessary to relocate, evacuate, or replenish the population that may be affected from hazards. Proposed shelters are illustrated in the maps.



\*Annex-A details the list of vulnerable settlements within flood plains prone to riverine flooding

\*Annex-B details the list of flood shelter locations



\*Annex-C details the list of earthquake shelter locations