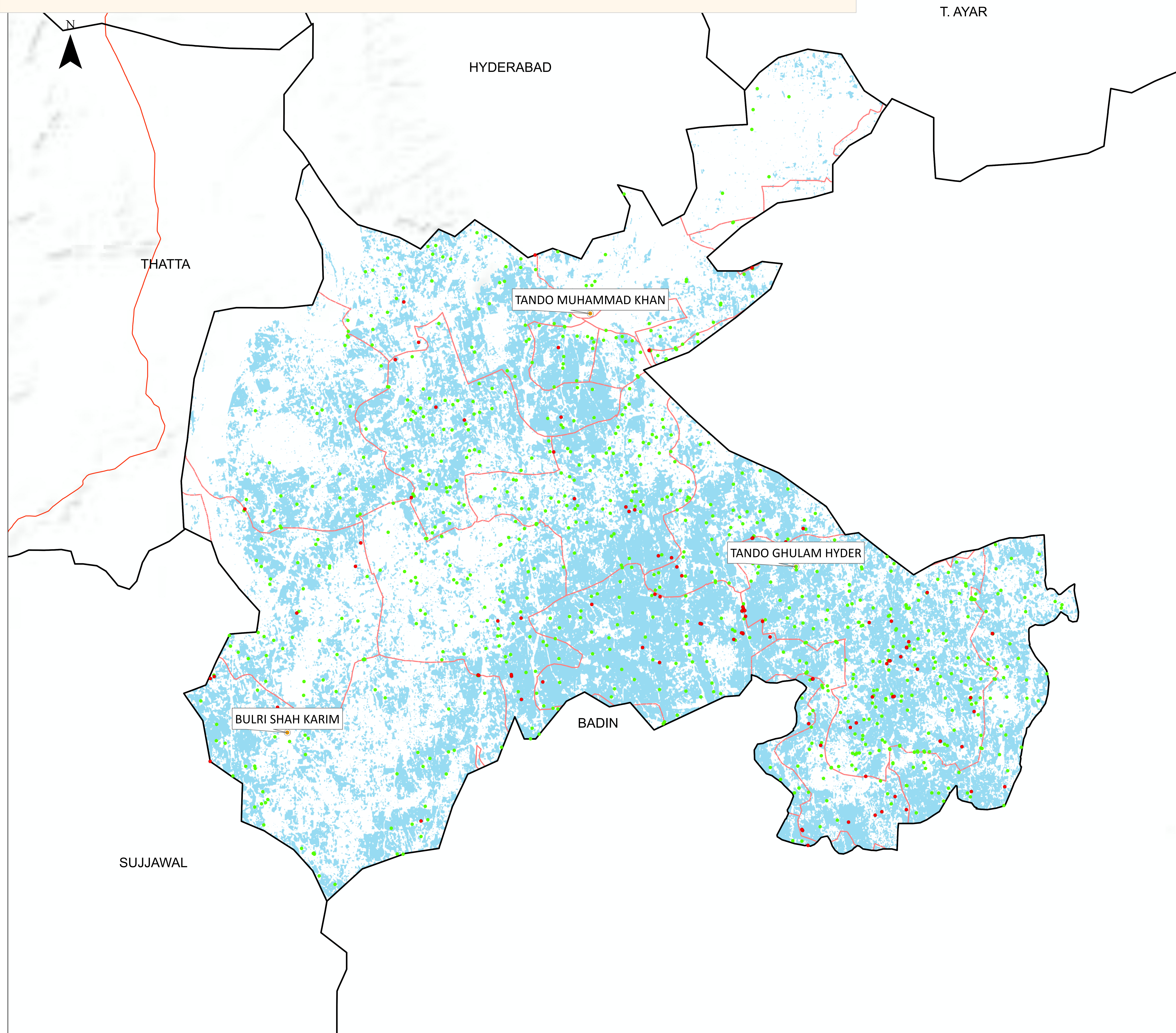


Flood Inundation in Tando Muhammad Khan District



District Profile		
District Area	1,813.46 Sq.Km	
Area Inundated	751.23 Sq.Km	41.43%
Crop Land	378,351.854 Acres	
Crop Land Inundated	174,040.3 Acres	46.00%
Rainfall (Jul-Aug)		332 mm
Population (as per 2017 Census)		705,357
Affected Union Councils		31 Out of 31

UC-wise Affected Villages		
Name	Submerged in Water (No.)	Surrounded By Water (No.)
TANDO GHULAM HYDER	27	170
GHULAM SHAH BAGRANI	18	57
KARIO	12	39
LAKHAT	7	78
ALLAH YAR TURK	6	68
BULRI SHAH KARIM	6	56
DANDO	4	64
NAZAR PUR	4	41
SAEEDPUR	4	50
JANHAN SOOMRO	3	39
SAEED MATTO	3	58
MULLAN KATIAR	2	27
TANDO SAIN DAD	2	20
GHARO	1	2
PHARKARA	1	11
T.M.KHAN 3	1	13
DUBI	-	1
SH.BHIRKIO	-	6
T.M.KHAN 1	-	4
T.M.KHAN 2	-	8

Disclaimer: Flood extent published by Sentinel-Asia has been used for preliminary damage assessment and depicts status of flood inundation as of image acquisition date. The Union Council boundaries and names used in development of this product were obtained from Board of Revenue, Sindh.

Product used: Detected flood water in Baluchistan Sindh provinces, as observed by ALOS-2 image on 21 August 2022.
Published by: <https://sentinel-asia.org/>

