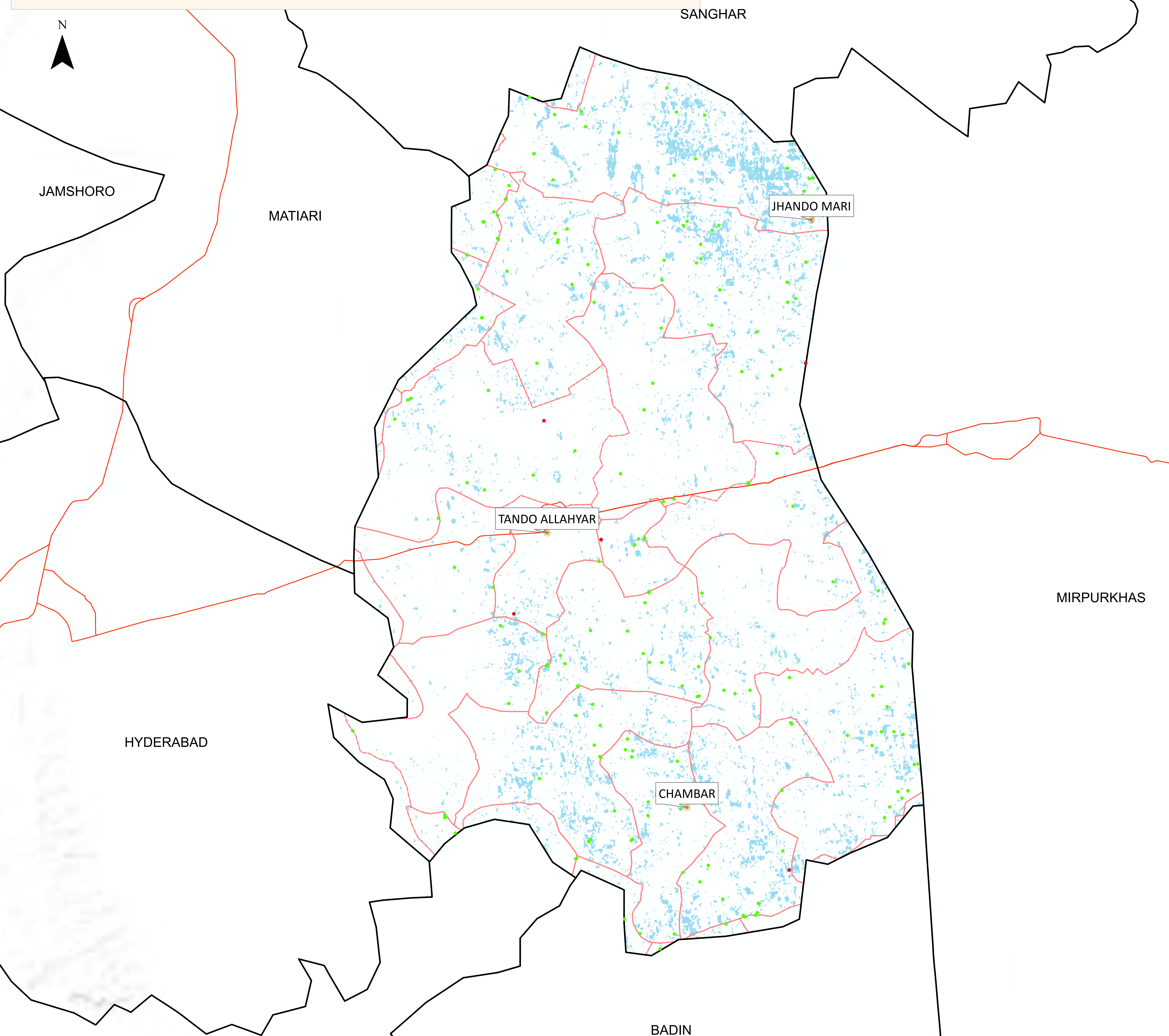


# Flood Inundation in Tando Allahyar District

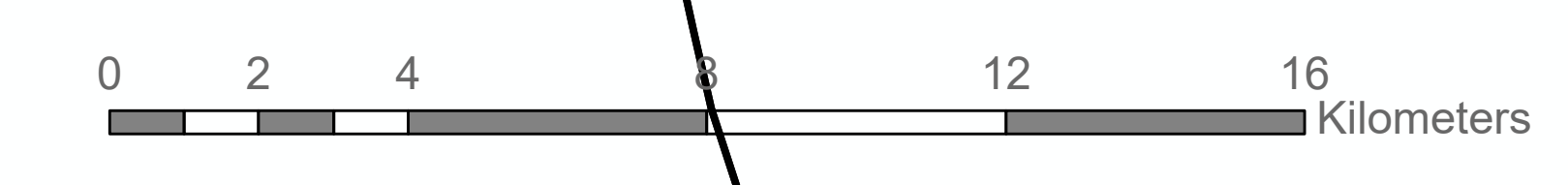


District Profile		
District Area	1,572.86 Sq.Km	
Area Inundated	103.54 Sq.Km	6.58%
Crop Land	350,407.12 Acres	
Crop Land Inundated	23,161.19 Acres	6.61%
Rainfall (Jul-Aug)	575 mm	
Population (as per 2017 Census)	880,515	
Affected Union Councils	28 Out of 28	

UC-wise Affected Villages		
Name	Submerged in Water (No.)	Surrounded By Water (No.)
BEGAN JARWAR	-	8
BUKERANI SHARIF	-	5
CHAMBER-1	-	11
CHAMBER-2	1	11
DAD KHAN JARWAR	-	12
DASORI	-	10
DHINGANO BOZDAR	-	2
GHULAM SHAH LAGHARI	-	2
HALE POTA	-	2
JHANDO MARI	-	18
MANIK LAGHARI	-	2
MIRABAD	1	23
MISSAN	-	5
MOOLAN	-	1
ODEROLAL STATION	-	4
ODEROLAL VILLAGE	-	9
PAK-SANGHAR	-	16
PIYARO LUND	-	8
SANJAR CHANG	-	18
SH.BHIRKIO	-	6
TANDO ALLAHYAR 2	1	2
TANDO ALLAHYAR 4	1	4
TANDO SOOMRO	1	10

**Disclaimer:** Flood extent published by Sentinel-Asia has been used for preliminary damage assessment and depicts status of flood inundation as of image acquisition date. The Union Council boundaries and names used in development of this product were obtained from Board of Revenue, Sindh.

**Product used:** Detected flood water in Baluchistan Sindh provinces, as observed by ALOS-2 image on 21 August 2022.  
**Published by:** <https://sentinel-asia.org/>



Cities/Towns	Union Councils
Submerged under Water	Highways
Surrounded by Water	Flood Water

Sources: Esri, USGS, NOAA, Sources: Esri, Garmin, USGS, NPS