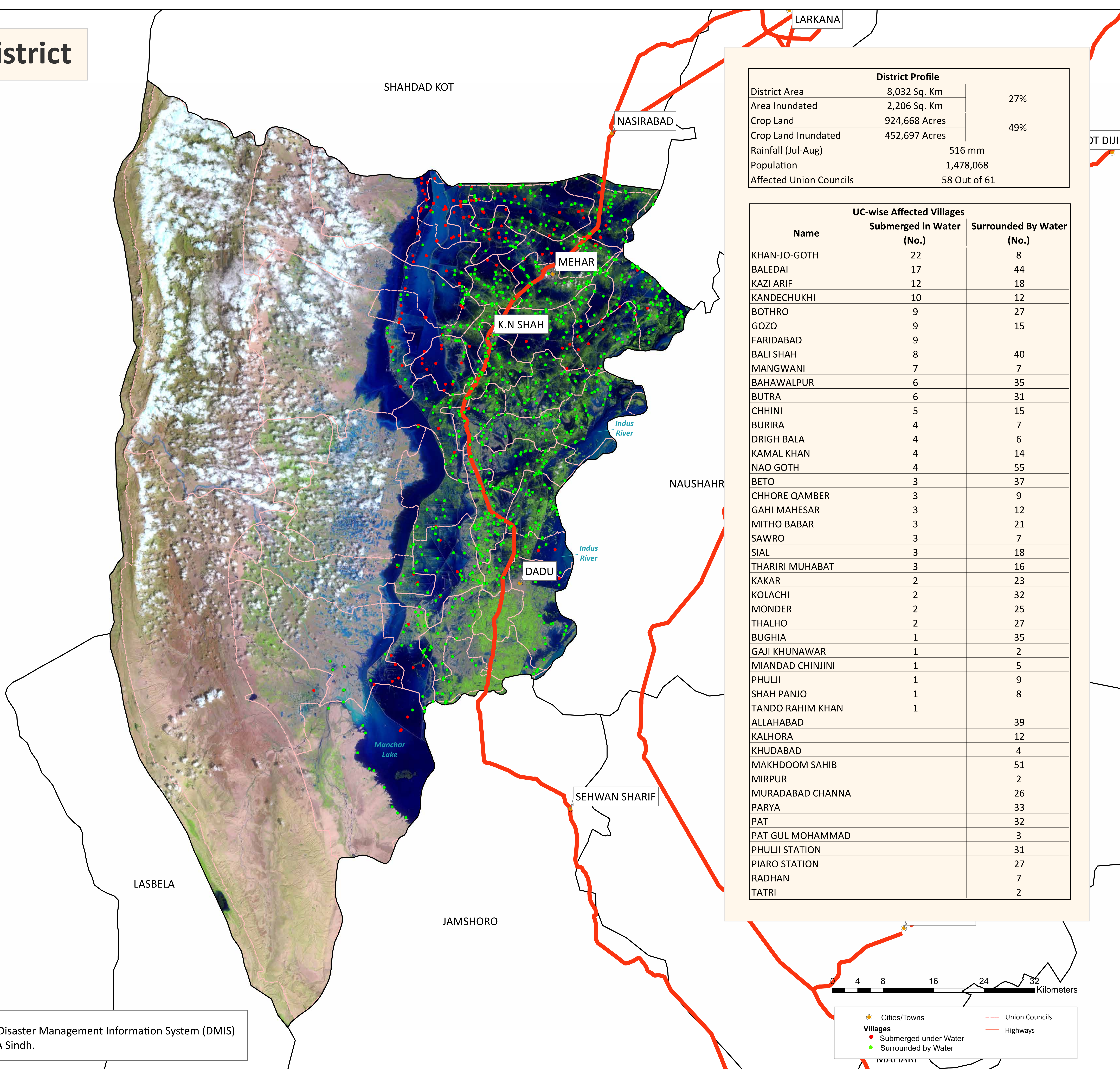
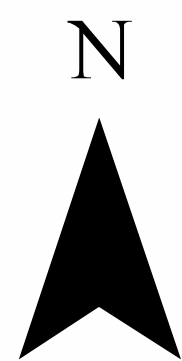


Flood Inundation in Dadu District



District Profile		
District Area	8,032 Sq. Km	
Area Inundated	2,206 Sq. Km	27%
Crop Land	924,668 Acres	
Crop Land Inundated	452,697 Acres	49%
Rainfall (Jul-Aug)	516 mm	
Population	1,478,068	
Affected Union Councils	58 Out of 61	

UC-wise Affected Villages		
Name	Submerged in Water (No.)	Surrounded By Water (No.)
KHAN-JO-GOTH	22	8
BALEDAI	17	44
KAZI ARIF	12	18
KANDECHUKHI	10	12
BOTHRO	9	27
GOZO	9	15
FARIDABAD	9	
BALI SHAH	8	40
MANGWANI	7	7
BAHAWALPUR	6	35
BUTRA	6	31
CHHINI	5	15
BURIRA	4	7
DRIGH BALA	4	6
KAMAL KHAN	4	14
NAO GOTH	4	55
BETO	3	37
CHHORE QAMBER	3	9
GAHI MAHESAR	3	12
MITHO BABAR	3	21
SAWRO	3	7
SIAL	3	18
THARIRI MUHABAT	3	16
KAKAR	2	23
KOLACHI	2	32
MONDER	2	25
THALHO	2	27
BUGHIA	1	35
GAJI KHUNAWAR	1	2
MIANDAD CHINJINI	1	5
PHULJI	1	9
SHAH PANJO	1	8
TANDO RAHIM KHAN	1	
ALLAHABAD		39
KALHORA		12
KHUDABAD		4
MAKHDOOM SAHIB		51
MIRPUR		2
MURADABAD CHANNA		26
PARYA		33
PAT		32
PAT GUL MOHAMMAD		3
PHULJI STATION		31
PIARO STATION		27
RADHAN		7
TATRI		2

Disclaimer: 30m resolution satellite image has been used for preliminary damage assessment and depicts status of flood inundation as of image acquisition date. It is pertinent to note that during the course of time, some breaches in FP Bund, Main Nara Valley Drain (MNVD) and irrigation channels were reported which may have further aggravated inundation situation in the district. The situation shall be updated through fresh satellite imagery. Due to the presence of clouds over some parts of the district inundation delineation may be affected. The Union Council boundaries in names used in development of this product were obtained from Board of Revenue, Sindh.

Source: Landsat 9 Collection 1, 28th August, 2022 05:56 GMT

