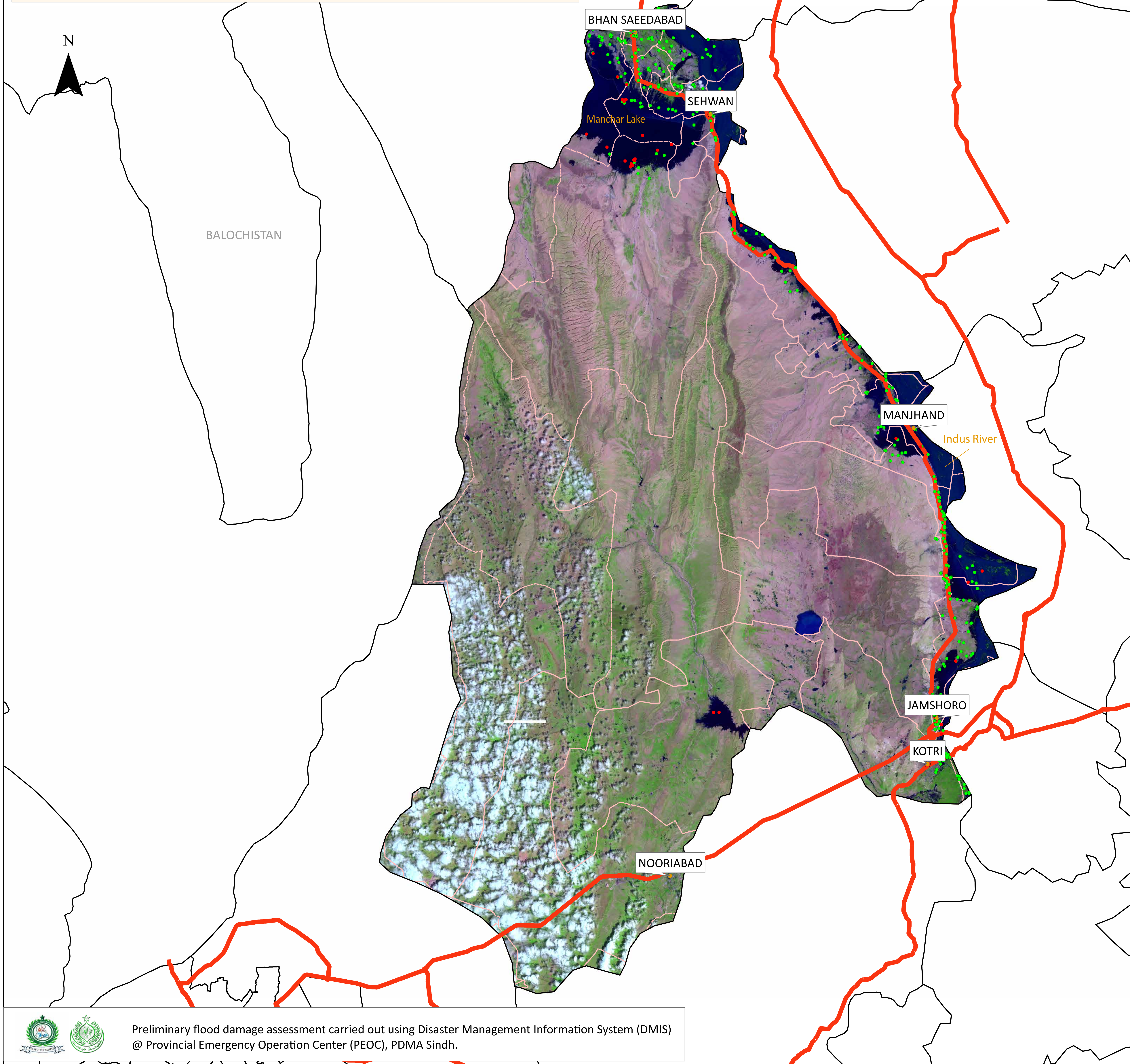


# Flood Inundation in Jamshoro District



District Profile		28/08/2022	05/09/2022	Change
District Area		808.49 Sq.Km	11,250.32 Sq.Km	
Area Inundated		7.19%	8.17%	+110.24
Crop Land		112,715.88 Acres	407645.34 Acres	
Crop Land Inundated		27.65%	32.37%	+19255.91
Rainfall (Jul-Aug)			378 mm	
Population (as per 2017 Census)			1,004,862	
Affected Union Councils		20 out of 45	20 Out of 45	

Name	Submerged in Water			Surrounded by Water		
	28/08/2022	05/09/2022	Change	28/08/2022	05/09/2022	Change
	BUBAK	7	6	-1	11	12
CHHINI	6	5	-1	31	32	+1
JHANGRA	6	9	+3	7	6	-1
A	2	3	+1	3	24	+21
MANJHAND	2	3	+1	38	43	+5
THANO BULA KHAN	2	2	0	-	-	-
SANN	1	1	0	13	13	0
AMRI	-	1	+1	22	21	-1
BHAN	-	-	-	26	26	0
CHANNA	-	-	-	26	26	0
DAL	-	-	-	15	15	0
JAMSHORO	-	-	-	3	13	+10
KHUDABAD	-	-	-	1	1	0
LAKHA	-	1	+1	21	20	-1
MANZOORABAD	-	-	-	1	3	+2
MARVI	-	-	-	1	1	0
MORHOJABAL	-	-	-	4	7	+3
SEHWAN I-	-	-	-	4	4	0
TALTI	-	-	-	36	36	0
UNERPUR	-	2	+2	38	42	+4
Allah Bachayo Shoro	-	-	-	-	18	+18
<b>Total</b>	<b>26</b>	<b>33</b>	<b>+7</b>	<b>301</b>	<b>363</b>	<b>+62</b>

**Disclaimer:** 30m resolution satellite image has been used for preliminary damage assessment and depicts status of flood inundation as of image acquisition date. The current situation is based on image acquisition date and depicts post breach scenario in Main Nara Valley Drain (MNVD), embankment of Manchar lake and irrigation channels. Due to the presence of clouds over some parts of the district inundation delineation may be affected. The Union Council boundaries in names used in development of this product were obtained from Board of Revenue, Sindh.

**Source:** Landsat 8 Collection 2, 05 September 2022 5: 57 GMT