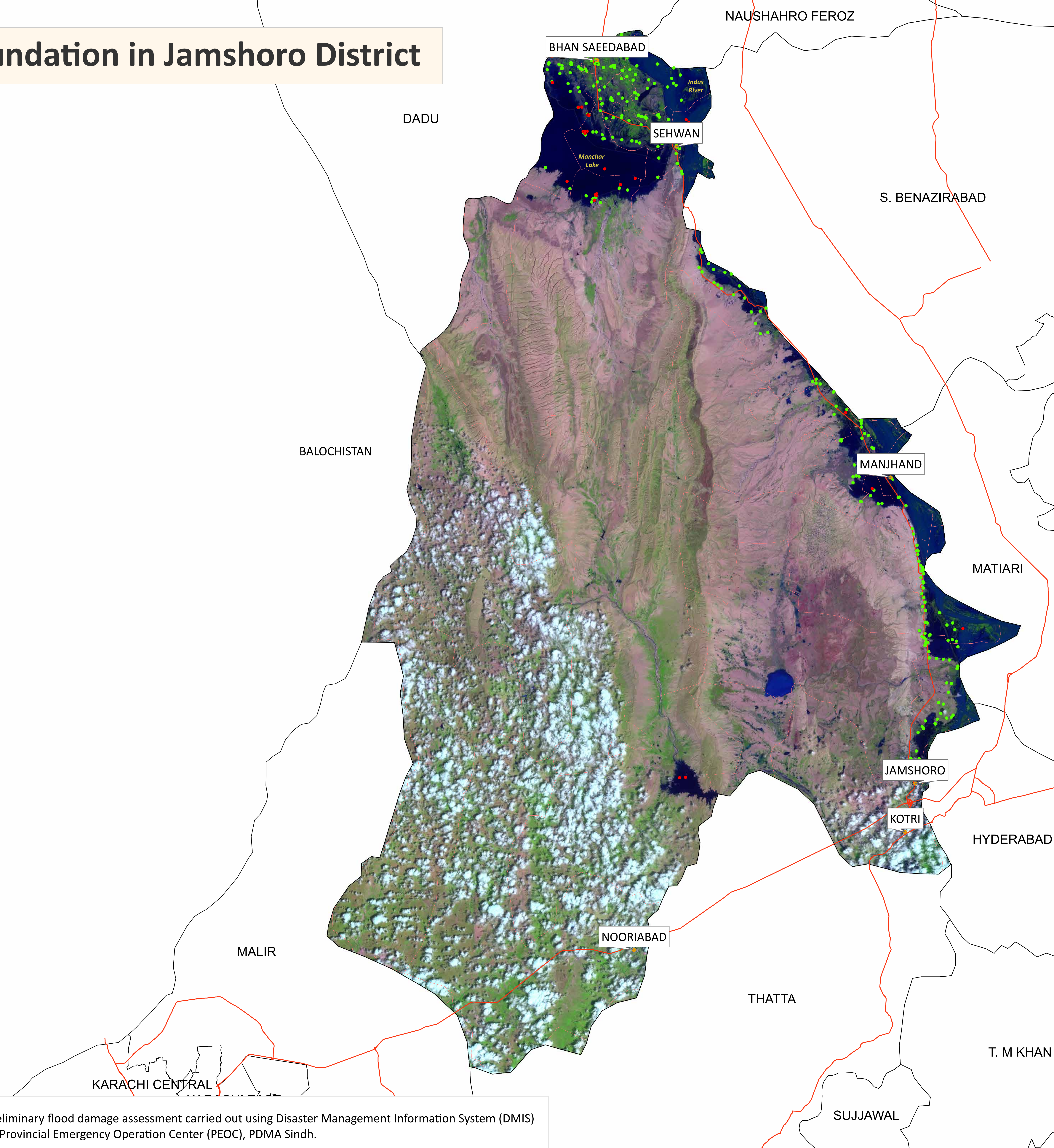


# Flood Inundation in Jamshoro District

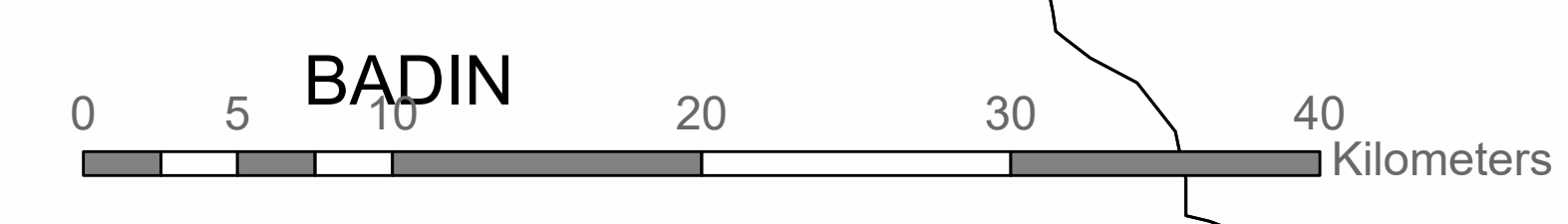


District Profile		
District Area	11250.32 Sq.Km	
Area Inundated	808.49 Sq.Km	7.19%
Crop Land	407645.34 Acres	
Crop Land Inundated	112715.88 Acres	27.65%
Rainfall (Jul-Aug)	378 mm	
Population (as per 2017 Census)	1,004,862	
Affected Union Councils	20 Out of 45	

UC-wise Affected Villages		
Name	Submerged in Water (No.)	Surrounded By Water (No.)
BUBAK	7	11
CHHINI	6	31
JHANGRA	6	7
A	2	3
MANJHAND	2	38
THANO BULA KHAN	2	-
SANN	1	13
AMRI	-	22
BHAN	-	26
CHANNA	-	26
DAL	-	15
JAMSHORO	-	3
KHUDABAD	-	1
LAKHA	-	21
MANZOORABAD	-	1
MARVI	-	1
MORHOJABAL	-	4
SEHWAN I-	-	4
TALTI	-	36
UNERPUR	-	38

**Disclaimer:** 30m resolution satellite image has been used for preliminary damage assessment and depicts status of flood inundation as of image acquisition date. It is pertinent to note that during the course of time, some breaches in MNVD, embankments of Manchar lake and irrigation channels were reported which may have further aggravated inundation situation in the district. The situation shall be updated through fresh satellite imagery. Due to the presence of clouds over some parts of the district inundation delineation may be affected. The Union Council boundaries in names used in development of this product were obtained from Board of Revenue, Sindh.

**Source:** Landsat 9 Collection 1, 28<sup>th</sup> August, 2022 05:56 GMT



- Cities/Towns
- Union Councils
- Villages
- Highways
- Submerged under Water
- Surrounded by Water