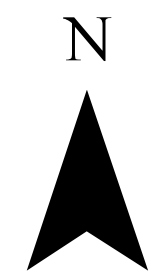


Flood Inundation in Kashmore District



District Profile

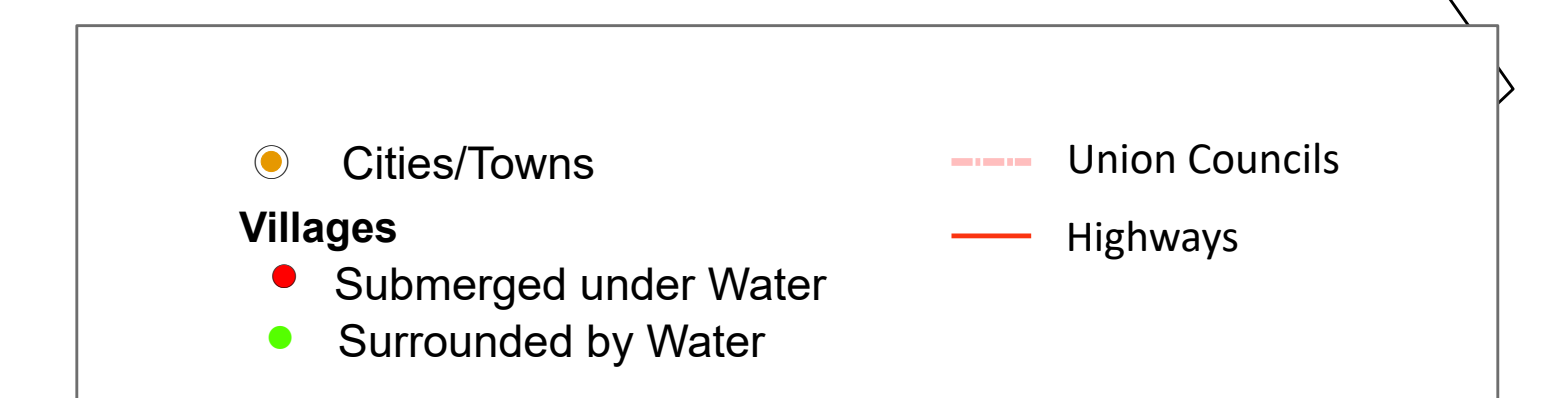
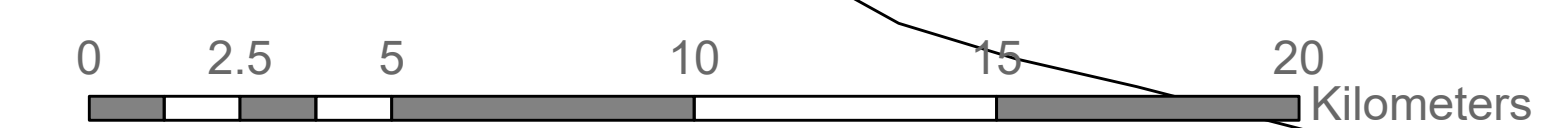
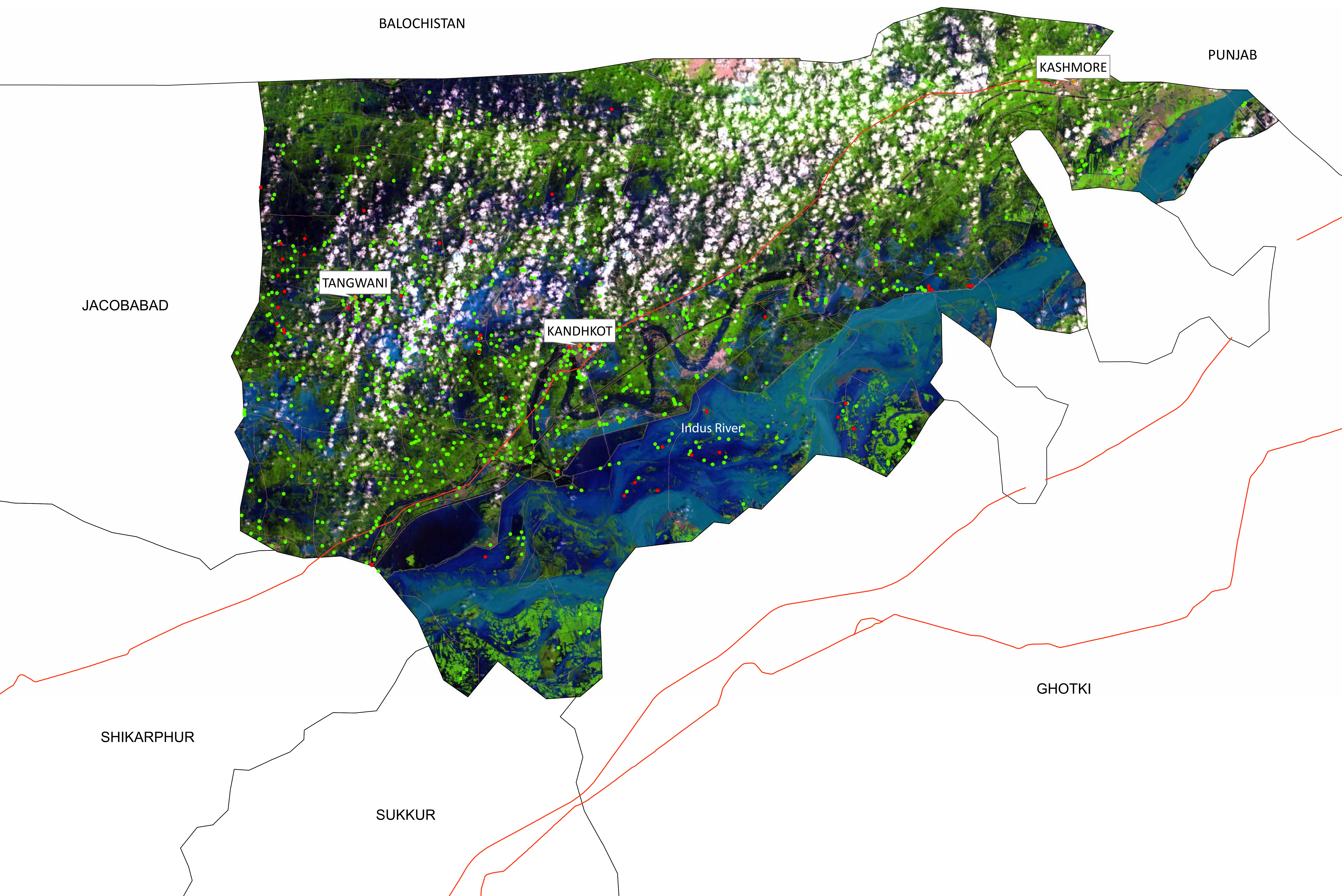
District Area	2549.03 Sq.Km	33.54%
Area Inundated	854.91 Sq.Km	
Crop Land	427180.14 Acres	21.91%
Crop Land Inundated	93609.08 Acres	
Rainfall (Jul-Aug)	455 mm	
Population (as per 2017 Census)	978,081	
Affected Union Councils	40 Out of 42	

UC-wise Affected Villages

Name	Submerged in Water (No.)	Surrounded By Water (No.)
SUHLIANI	7	41
BADANI	6	17
GUBLO	6	34
HAIBAT	5	36
DARI (GHOUSPUR)	4	29
LALAO	4	73
SAIFAL	4	47
CHEEL	2	32
KAJILI	2	27
AKHERO	1	55
BAGODEHO NO 29	1	13
GIHALPUR	1	18
LASHARI	1	23
MALEER	1	72
RISALDAR	1	8
TANGWANI	1	50
DOULATPUR	-	28
DUNIAPUR	-	52
GULANPUR	-	1
GULWALI	-	68
JAMAL	-	37
KARAMPUR	-	15
KASHMORE COLONY-I	-	12
KASHMORE-II	-	23
KUMB	-	3
MEHMOODA BAGH	-	3
NIL	-	6
RASOOL BUX KHAN CHACHAR	-	38
SODHI	-	9
TOJ	-	8
ZORGAR	-	38

Disclaimer: 30m resolution satellite image has been used for preliminary damage assessment and depicts status of flood inundation as of image acquisition date. Due to the presence of clouds over some parts of the district inundation delineation may be affected. The Union Council boundaries in names used in development of this product were obtained from Board of Revenue, Sindh.

Source: Landsat 8 Collection 1, 29th August 2022 5: 50 GMT



Preliminary flood damage assessment carried out using Disaster Management Information System (DMIS)
 @ Provincial Emergency Operation Center (PEOC), PDMA Sindh.