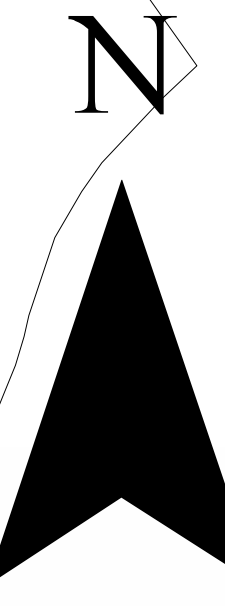
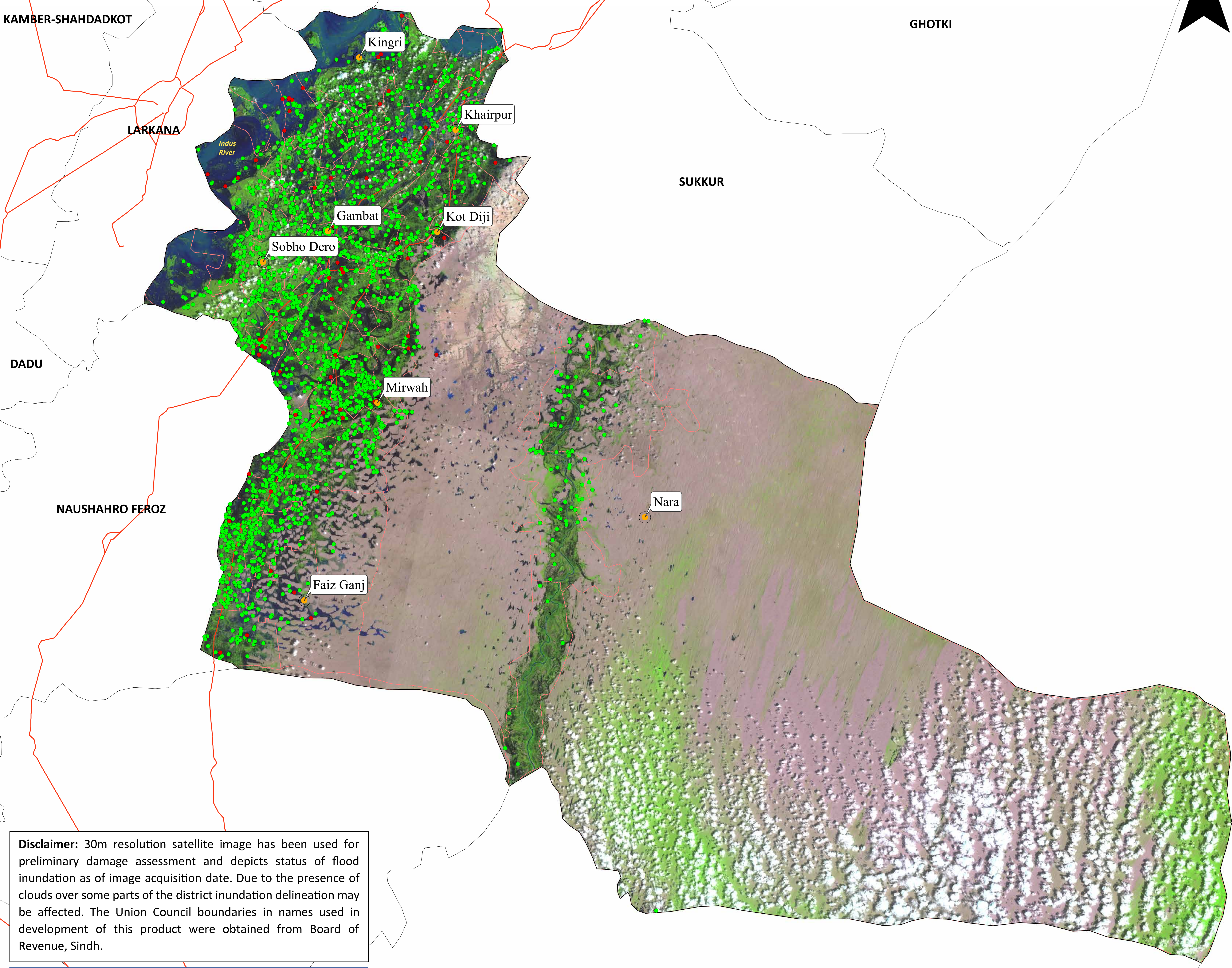


# Flood Inundation in Khairpur District



District Profile		
District Area	15913 Sq.Km	8.00%
Area Inundated	1206 Sq.Km	
Crop Land	825941 Acres	22.00%
Crop Land Inundated	181936 Acres	
Rainfall (Jul-Aug)	576 mm	
Population (as per 2017 Census)	2,435,181.0	
Affected Union Councils	89 Out of 91	

UC-wise Affected Villages		
Name	Submerged in Water (No.)	Surrounded By Water (No.)
JHANDO MASHAIK	6	44
RIPRI	6	45
HADAL SHAH	5	41
AGRA	4	35
RASOOLABAD	4	44
KHANPUR	3	48
KOT JUBO	3	32
TANDO MASTI	3	118
AKARI	2	59
HINDIARI	2	68
KOT LALU	2	39
NIZAMANI	2	20
RAZABAD	2	36
VEESAR	2	67
DEPARJA	1	32
DRIB MEHAR SHAH	1	10
GAMBAT	1	12
JESKANI	1	11
KAMALDERO	1	41
KANDIARI	1	48
KARUNDI	1	84
KHEMTA	1	14
KHUHRA	1	19
KOT DIJI	1	2
KOT MIR MOHAMMAD	1	21
KUMB	1	40
MANGHANWARI	1	25
MOHSIN SHAH	1	42
PACCA CHANG	1	95
SABAR RIND	1	19
SETARIJA	1	48
SHADI SHAHEED	1	24
SOHU	1	14
TANDO MIR ALI	1	56
THARI MIRWAH	1	22
AHMED PUR	-	21
BABERLOI	-	7
BAPHO	-	11
BAQI KHAN	-	71
BHANGO BEHAN	-	55
BHELARO	-	21
BOZDAR WADA	-	38
BUKHARI	-	5
CHOOON DIKO	-	36
Fareedabad	-	33
FATEHPUR	-	28
GADEJI	-	61
JADO WAHAN	-	44
KHENWARI	-	6
KOLAB JIAL	-	7
LAYARI	-	17
LOUNG BHATTI	-	1
MACHYOON	-	5
MAD	-	39
MANDAN	-	53
MEHAR ALI	-	16
MORI	-	5
MUHBA WAH	-	40
NASIR FAQIR	-	4
NOORPUR	-	17
PIR HAYAT SHAH	-	45
PIR JOGOTH	-	6
PIRYALOI	-	15
RANI PUR UN	-	21
SADERJI	-	23
SAGYOON	-	18
SAMI	-	24
SIKANDERABAD	-	9
SOBHODERO	-	31
TAJJAL	-	40
THERHI	-	3

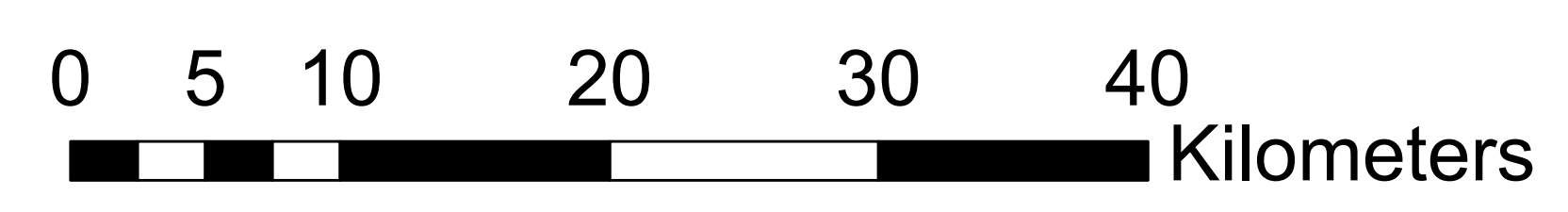


**Disclaimer:** 30m resolution satellite image has been used for preliminary damage assessment and depicts status of flood inundation as of image acquisition date. Due to the presence of clouds over some parts of the district inundation delineation may be affected. The Union Council boundaries in names used in development of this product were obtained from Board of Revenue, Sindh.

**Source:** Landsat 9 Collection 1, 28<sup>th</sup> August, 2022 05:56 GMT

Preliminary flood damage assessment carried out using Disaster Management Information System (DMIS) @ Provincial Emergency Operation Center (PEOC), PDMA Sindh.

SANGHAR



- Cities/Towns
- Submerged under Water
- Surrounded by Water
- Union Councils
- Highways