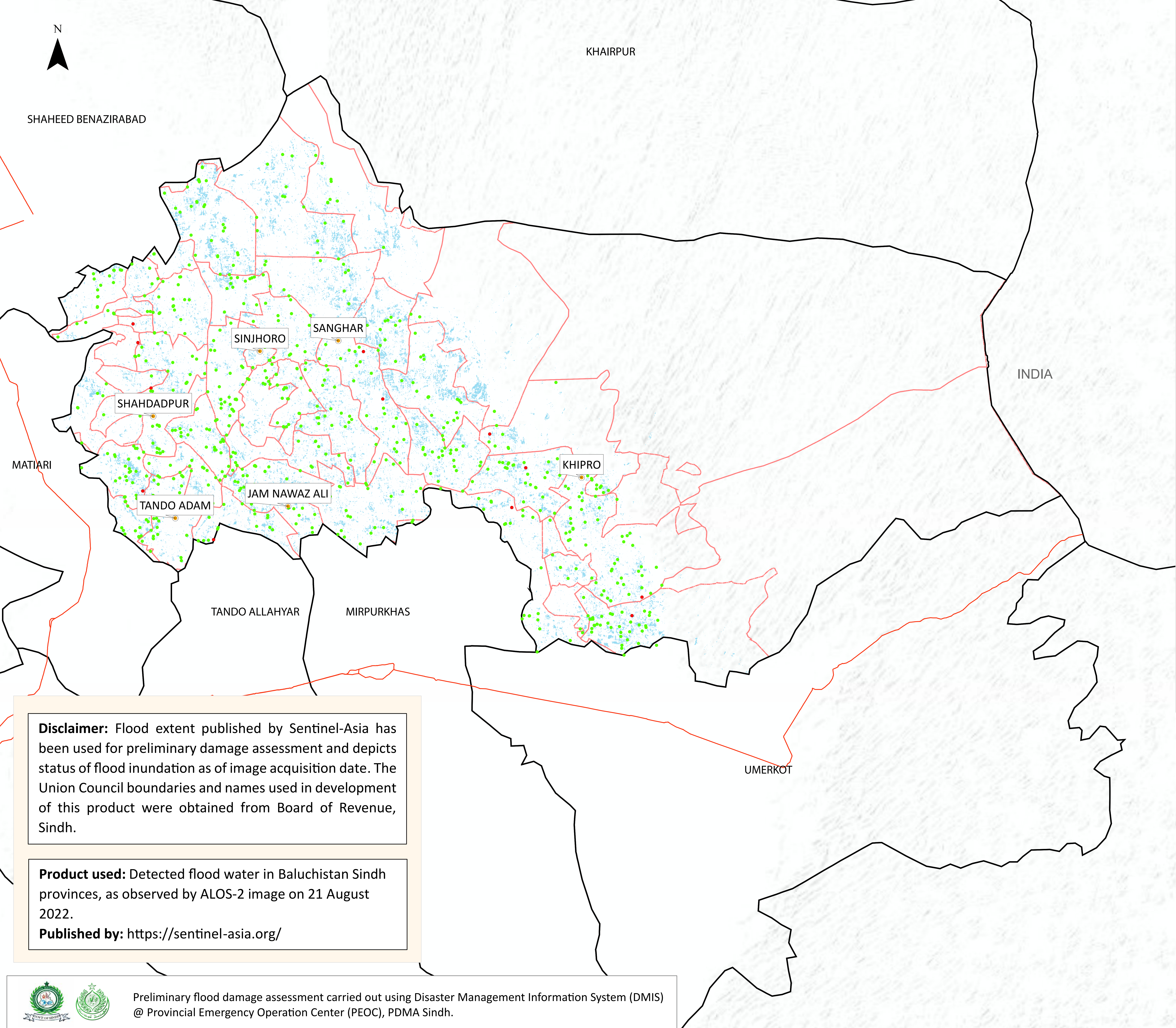


Flood Inundation in Sanghar District



District Profile		
District Area	10,259.02 Sq.Km	3.80%
Area Inundated	390 Sq.Km	
Crop Land	1,058,527.05 Acres	8.06%
Crop Land Inundated	85,345.036 Acres	
Rainfall (Jul-Aug)	582 mm	
Population (as per 2017 Census)	2,123,792	
Affected Union Councils	43 Out of 44	

UC-wise Affected Villages		
Name	Submerged in Water (No.)	Surrounded By Water (No.)
ASGHARABAD	1	17
BARHOON	-	19
BERANI	1	16
CHOTIARYOON	-	3
DHIL YAR	1	51
GUJRI	-	13
GUL MOHAMMAD LAGHARI	-	9
HATHUNGO	-	2
HOT WASSAN	-	14
JAFFAR KHAN LEGHARI	-	32
JAM NAWAZ ALI	-	30
JATIA	1	13
JHOL	-	13
JINHAR	1	14
KANDIARI	1	22
KANHAR	-	20
KEHORE	2	26
KHADRO	-	10
KHADWARI	-	13
KHORI	1	24
KHUMB DARHOON	1	24
LUNDO	1	-
KURKALI	-	17
MALDASI	-	5
MANIK THAHIM	-	29
MIAN	-	11
MIR HASSAN MARI	-	16
MITHO KHOSO	-	26
NAUABAD	-	23
PERU FAQIR SHORO	-	16
PHULLAHDAYUN	-	5
PRITAMABAD	-	36
RUNJHO	1	35
SARHARI	-	17
SAYYED SIBGHATULLAH SHAHEED	-	20
SHAH MARDAN ABAD	-	12
SHAH SIKANDARABAD	-	10
SHAHPUR CHAKAR	-	5
SINJHORO	-	4
SITHARPIR	-	25
SOOMAR FAQIR HINGORO	-	7

Disclaimer: Flood extent published by Sentinel-Asia has been used for preliminary damage assessment and depicts status of flood inundation as of image acquisition date. The Union Council boundaries and names used in development of this product were obtained from Board of Revenue, Sindh.

Product used: Detected flood water in Baluchistan Sindh provinces, as observed by ALOS-2 image on 21 August 2022.
Published by: <https://sentinel-asia.org/>

