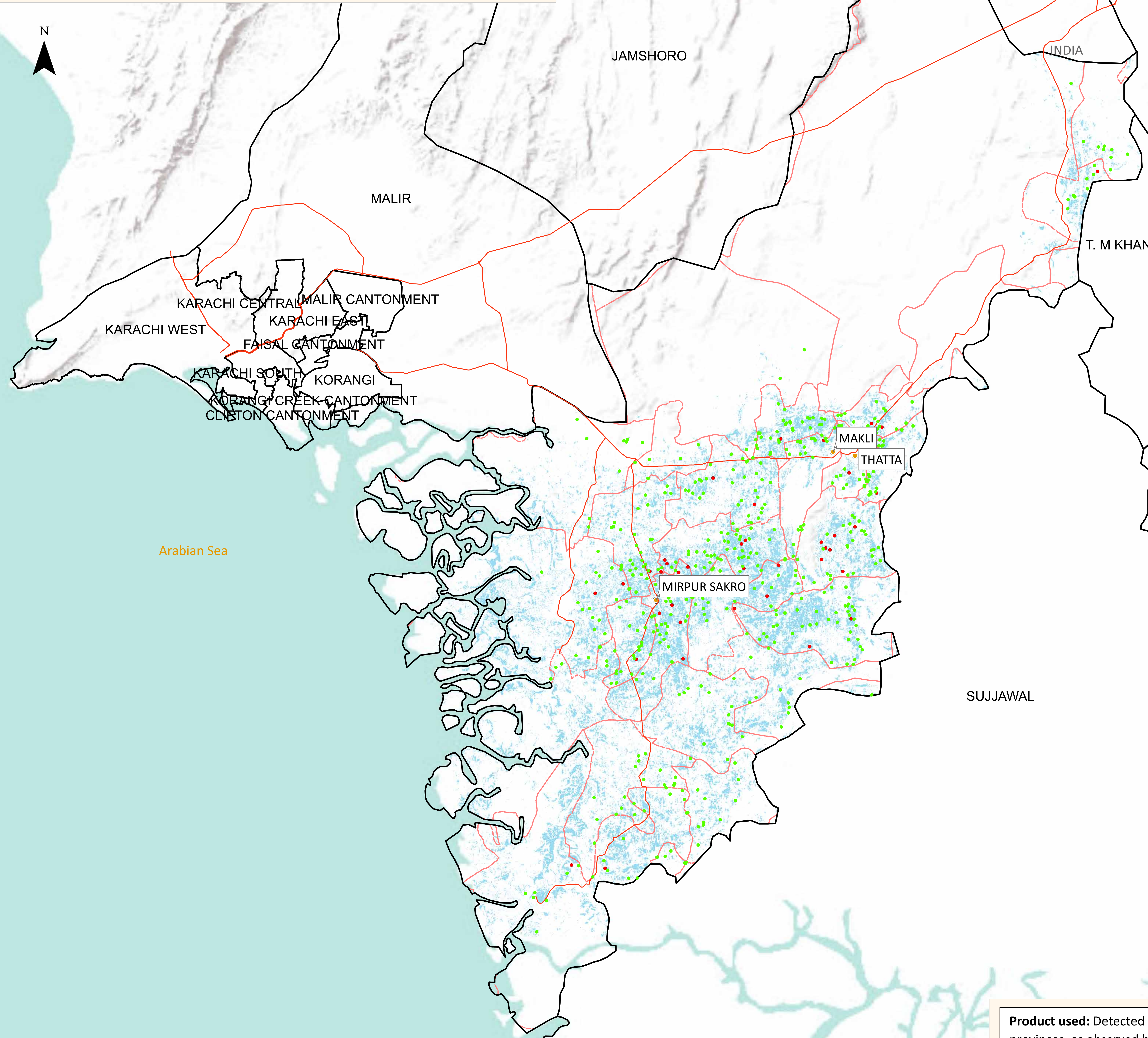


# Flood Inundation in Thatta District



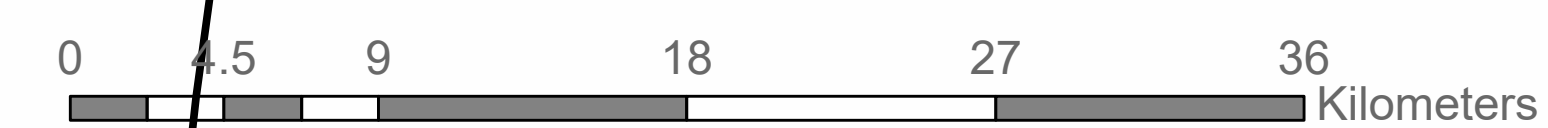
## District Profile

District Area	7,704.75 Sq.Km	
Area Inundated	825.84 Sq.Km	10.72%
Crop Land	593,783.27 Acres	
Crop Land Inundated	132,489.166 Acres	22.31%
Rainfall (Jul-Aug)		521 mm
Population (as per 2017 Census)		965,745
Affected Union Councils		38 Out of 43

## UC-wise Affected Villages

Name	Submerged in Water (No.)	Surrounded By Water (No.)
DOMANI	7	30
GHULAMULLAH	5	40
SUKHPUR	5	32
KARAMPUR	4	33
KHAN	3	41
CHATO CHAND	2	16
CHOUBANDI	2	33
GUJJO	2	34
HAJI GHIRANO	2	20
KETI BUNDAR	2	21
THATTA I	2	27
JHURRK	1	8
KALAN KOT	1	22
KALRI	1	38
MAKLI	1	23
MIRPUR SAKRO	1	21
BUHARA	-	6
DHABEJI	-	10
GARHO	-	18
GHARO	-	5
GOONGANI	-	1
JHIMPIR	-	2
JONGO JALBANI	-	2
JUNGSHAHI	-	4
KHARO CHAN	-	4
KOTRI ALLAH RAKHIO SHAH	-	10
MAHAR	-	16
TANDO HAFIZ SHAH	-	8
UDASSI	-	11

**Disclaimer:** Flood extent published by Sentinel-Asia has been used for preliminary damage assessment and depicts status of flood inundation as of image acquisition date. The Union Council boundaries and names used in development of this product were obtained from Board of Revenue, Sindh.



**Product used:** Detected flood water in Baluchistan Sindh provinces, as observed by ALOS-2 image on 21 August 2022.

**Published by:** <https://sentinel-asia.org/>



Preliminary flood damage assessment carried out using Disaster Management Information System (DMIS)  
@ Provincial Emergency Operation Center (PEOC), PDMA Sindh.

- Cities/Towns
- Submerged under Water
- Surrounded by Water
- Union Councils
- Highways
- Flood Water