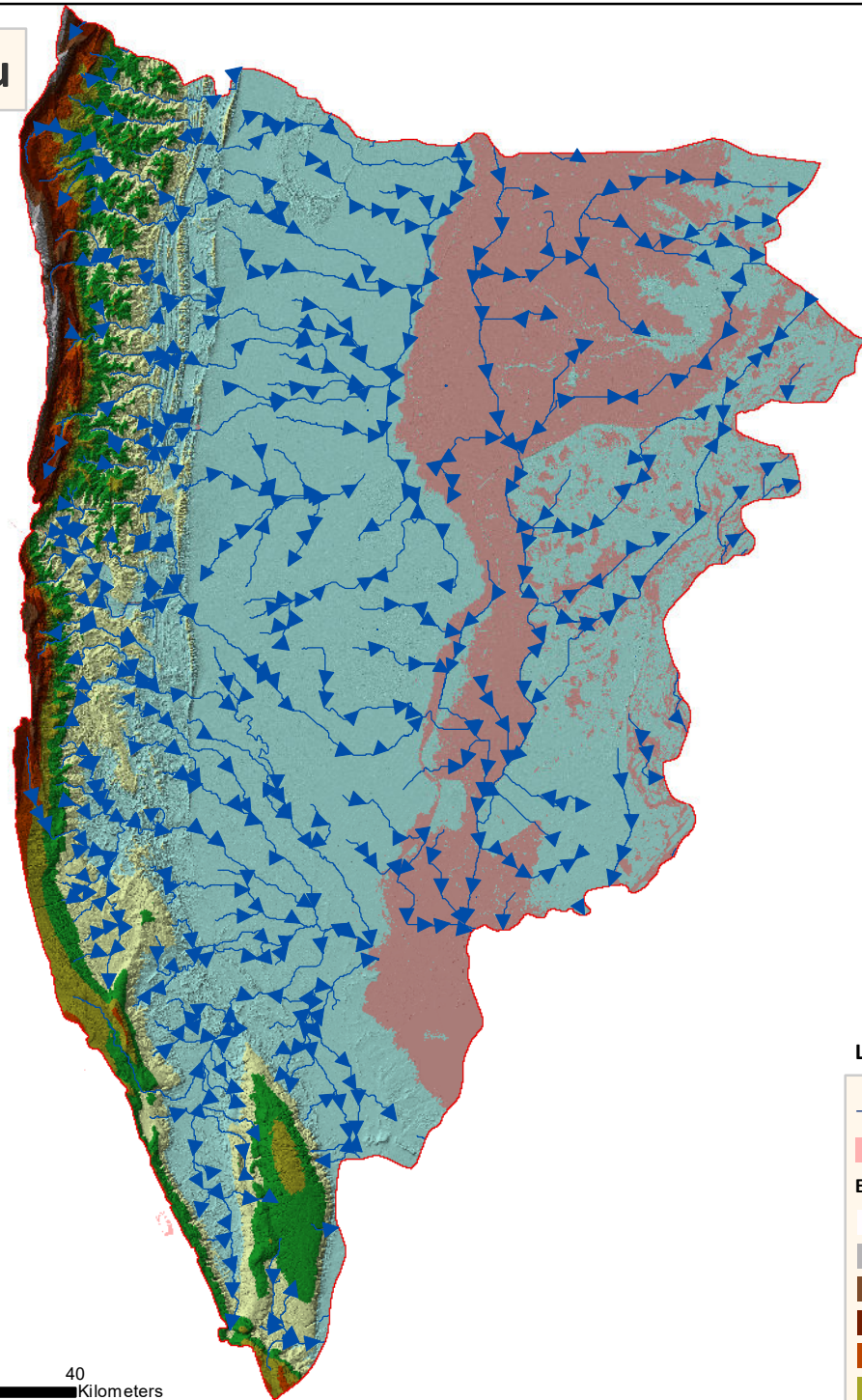
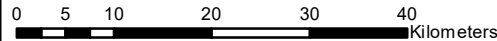


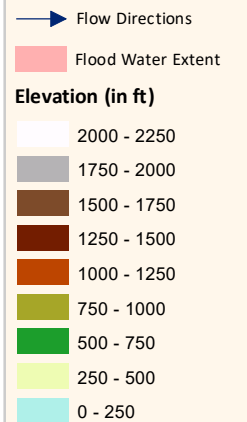
# Natural Flow Directions - District Dadu



5 m Digital Elevation Model (DEM) has been used to generate surface topography of the district. The same product was used to extract natural drainage / gradients / flow directions. This map can be useful for determining route(s) for safe dewatering of flood water



## Legend



Preliminary flood damage assessment carried out using Disaster Management Information System (DMIS)  
@ Provincial Emergency Operation Center (PEOC), PDMA Sindh.