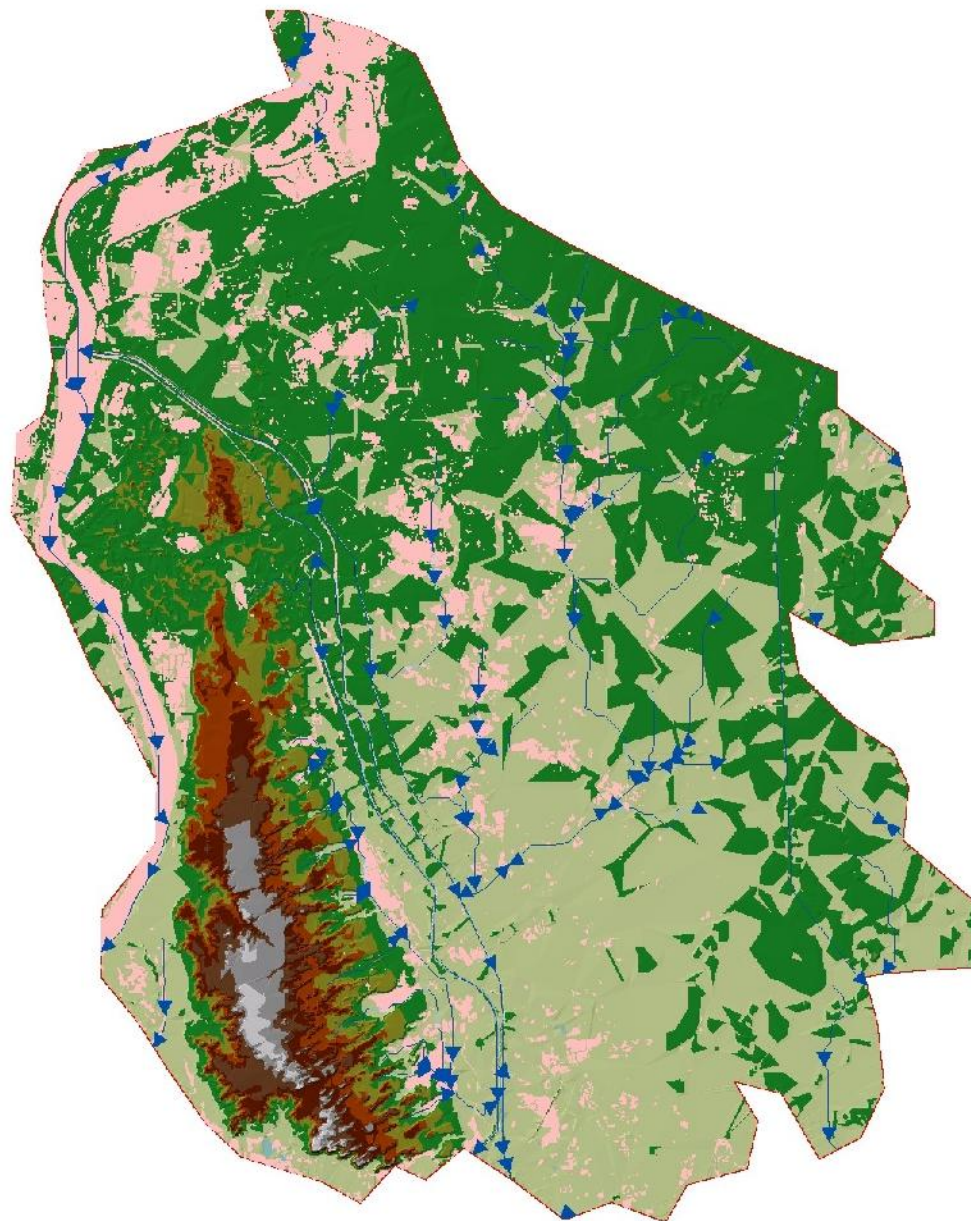


Natural Flow Directions - District Hyderabad



5 m Digital Elevation Model (DEM) has been used to generate surface topography of the district. The same product was used to extract natural drainage / gradients / flow directions. This map can be useful for determining route(s) for safe dewatering of flood water



Legend

- ▶ Flow Directions
- █ Flood Water Extent
- Elevation (In ft)**
 - 70.867 - 79
 - 62.333 - 70.867
 - 54 - 62.333
 - 45.667 - 54
 - 37.333 - 45.667
 - 29 - 37.333
 - 20.667 - 29
 - 12.333 - 20.667
 - 4 - 12.333



Preliminary flood damage assessment carried out using Disaster Management Information System (DMIS)
@ Provincial Emergency Operation Center (PEOC), PDMA Sindh.