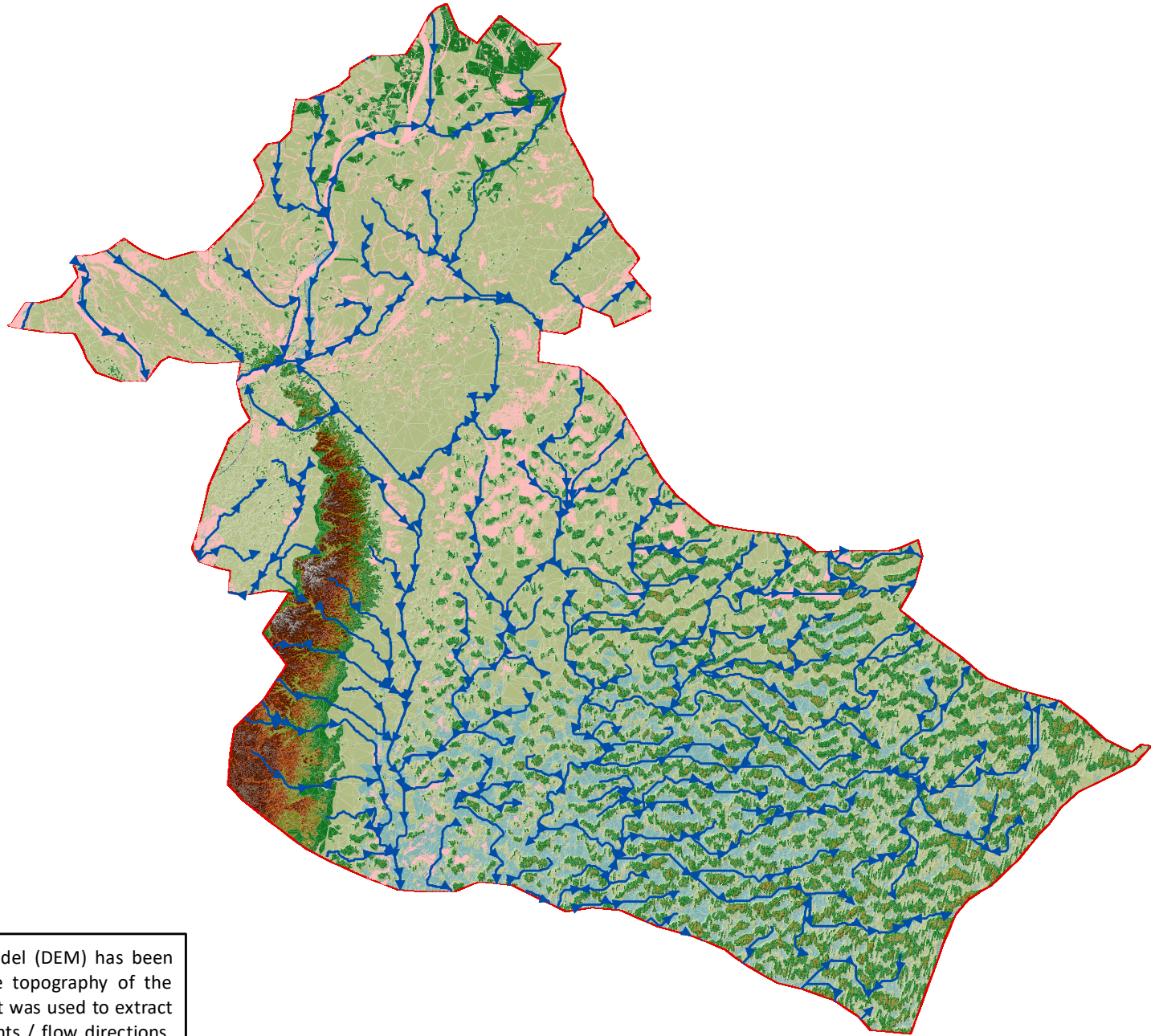
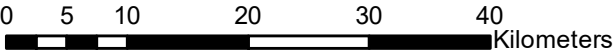


Natural Flow Directions - District Sukkur



5 m Digital Elevation Model (DEM) has been used to generate surface topography of the district. The same product was used to extract natural drainage / gradients / flow directions. This map can be useful for determining route(s) for safe dewatering of flood water



Legend

- Flow Directions
- Flood Water Extent
- Elevation (in ft)
 - 145.222 - 158
 - 132.444 - 145.222
 - 119.667 - 132.444
 - 106.889 - 119.889
 - 94.111 - 106.889
 - 81.333 - 94.111
 - 68.556 - 81.333
 - 55.778 - 68.556
 - 43 - 55.778



Preliminary flood damage assessment carried out using Disaster Management Information System (DMIS)
@ Provincial Emergency Operation Center (PEOC), PDMA Sindh.