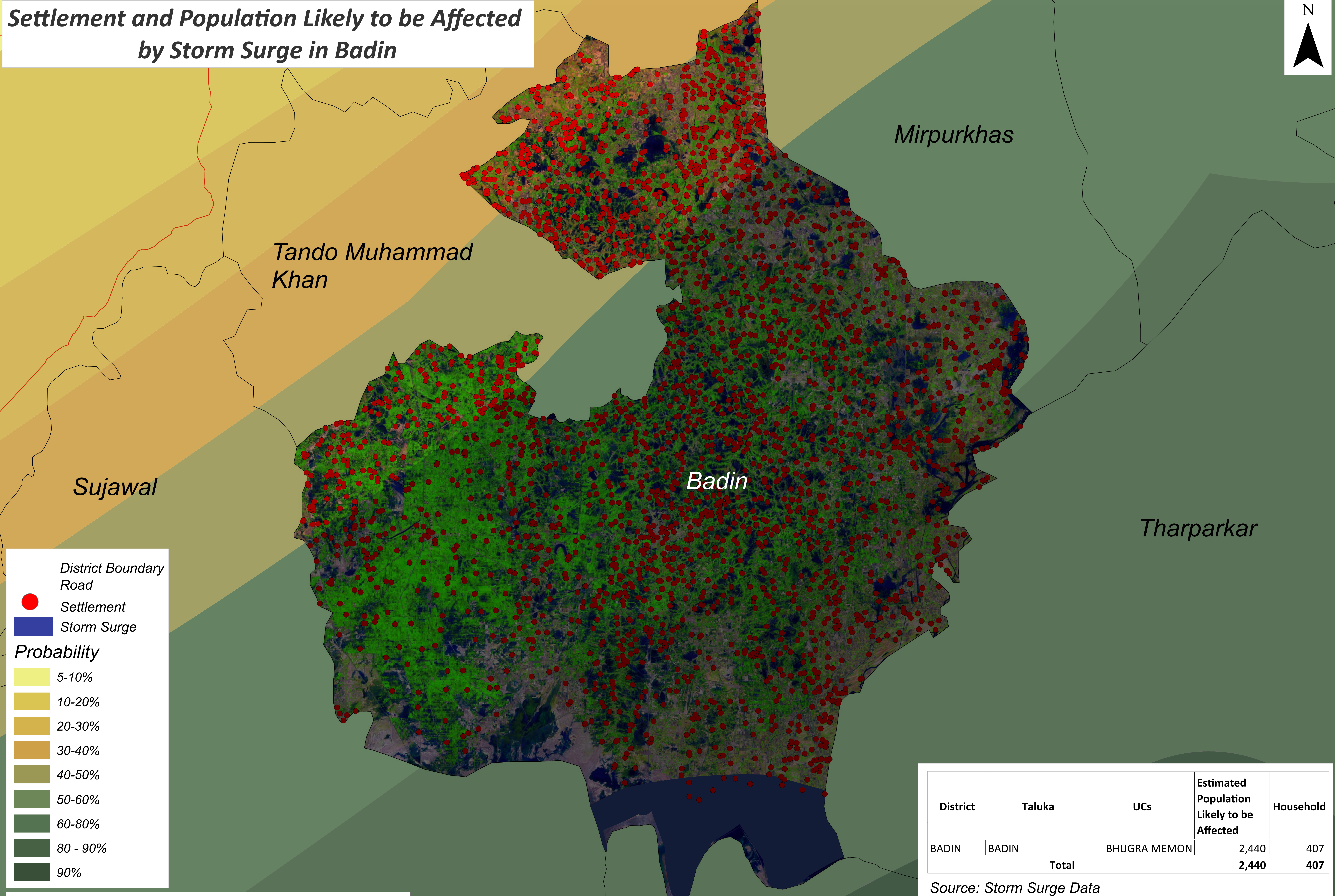
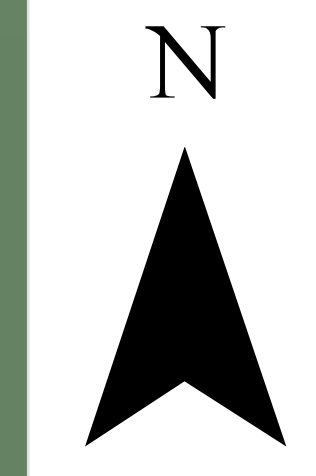


Settlement and Population Likely to be Affected by Storm Surge in Badin



District Boundary
 Road
● Settlement
 Storm Surge

Probability

- 5-10%
- 10-20%
- 20-30%
- 30-40%
- 40-50%
- 50-60%
- 60-80%
- 80 - 90%
- 90%

District	Taluka	UCs	Estimated Population Likely to be Affected	Household
BADIN	BADIN	BHUGRA MEMON	2,440	407
Total			2,440	407

Source: Storm Surge Data

